



### Left Plot w/ Pics

505-341-0109

Pipe ID <b>L13-2</b>	City	Street <b>CUMBERLAND RD 2160 ...</b>	Shape	Map #1	Basin
<b>US Manhole</b> <b>L13-2</b>	Section Length <b>110.909</b>	Year Laid	Material <b>CON</b>	Section Type	
<b>DS Manhole</b> <b>L13-1</b>	Inspected Length <b>348.1</b>	Year Renewed	Depth US <b>10</b>	Depth DS	Joint Leng... Diameter <b>10</b>
Cleaned	Situation		Reason		
Date <b>20170228</b>	Clean Date	Weather		Remark	
Start Time <b>09:00</b>					
Operator <b>STEVEN</b>	Customer	Truck <b>4165</b>	Inspection Dir. <b>DOWNSTREAM</b>	Info	
Operator Comment	P.O. Number	Present	Flow Control	Camera	

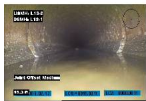


L13-2

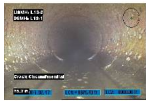
Distance: Pos: Val 1 / 2 : % : Gallons:



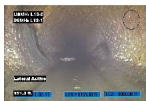
Code: TIBU	0.0 ft.				
Observation: Inspection Begins at Upstream MH					
Remarks:					



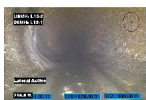
Code: YJOM	15.3 ft.				
Observation: Joint Offset Medium					
Remarks:					



Code: YCC	75.7 ft.	3 - 9			
Observation: Crack Circumferential					
Remarks:					



Code: CLV	151.3 ft.	9			
Observation: Lateral Active					
Remarks:					



Code: CLV	216.9 ft.	9			
Observation: Lateral Active					
Remarks:					



Code: CLC	253.6 ft.	3			
Observation: Lateral Capped					
Remarks:					




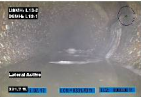
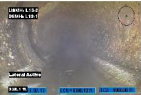
Code: CLV	254.5 ft.	3			
Observation: Lateral Active					
Remarks:					



### Left Plot w/ Pics

505-341-0109

Pipe ID <b>L13-2</b>	City	Street <b>CUMBERLAND RD 2160 ...</b>	Shape	Map #1	Basin
<b>US Manhole</b> <b>L13-2</b>	Section Length <b>110.909</b>	Year Laid	Material <b>CON</b>	Section Type	
<b>DS Manhole</b> <b>L13-1</b>	Inspected Length <b>348.1</b>	Year Renewed	Depth US <b>10</b>	Depth DS	Joint Leng... Diameter <b>10</b>
Cleaned	Situation		Reason		
Date <b>20170228</b>	Clean Date	Weather		Remark	
Start Time <b>09:00</b>					
Operator <b>STEVEN</b>	Customer	Truck <b>4165</b>	Inspection Dir. <b>DOWNSTREAM</b>	Info	
Operator Comment	P.O. Number	Present	Flow Control	Camera	

	Code: YCC	301.8 ft.	3 - 8			
Observation: Crack Circumferential						
Remarks:						
	Code: CLV	331.7 ft.	3			
Observation: Lateral Active						
Remarks:						
	Code: CLV	348.1 ft.	9			
Observation: Lateral Active						
Remarks:						

L13-1

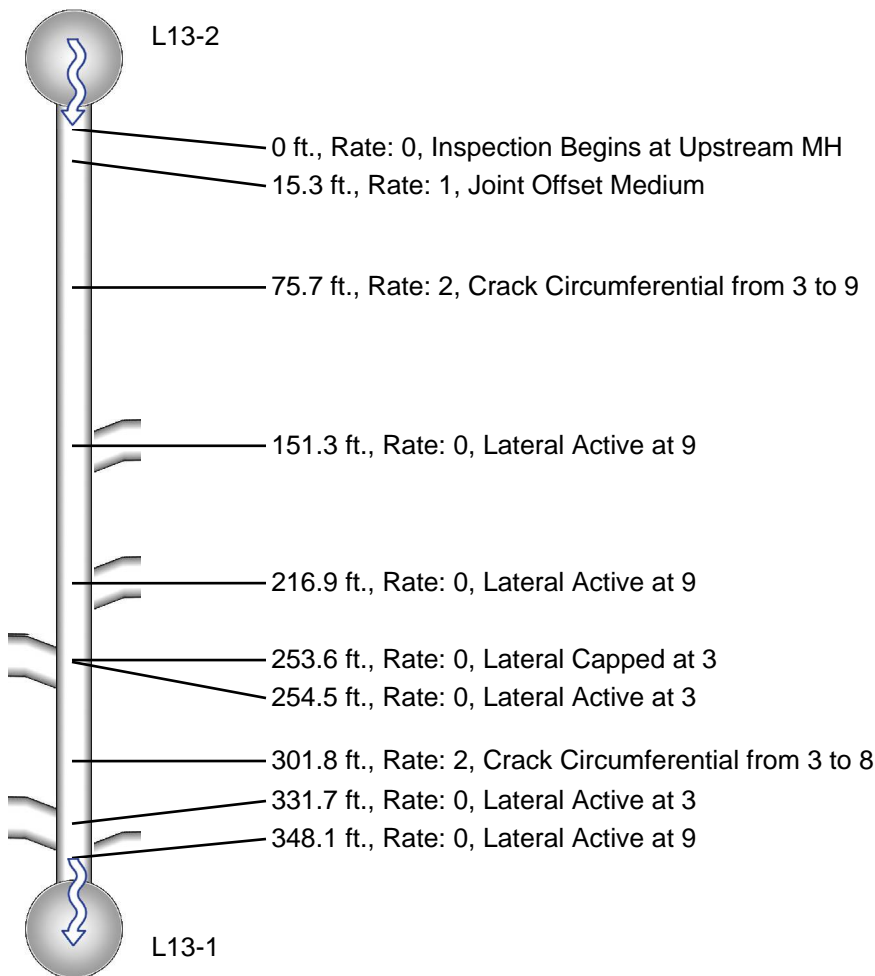


### Scaled Plot

505-341-0109

Pipe ID <b>L13-2</b>	City	Street <b>CUMBERLAND RD 2160 ...</b>	Shape	Map #1	Basin
<b>US Manhole</b> <b>L13-2</b>	Section Length <b>110.909</b>	Year Laid	Material <b>CON</b>	Section Type	
<b>DS Manhole</b> <b>L13-1</b>	Inspected Length <b>348.1</b>	Year Renewed	Depth US <b>10</b>	Depth DS	Joint Leng... Diameter <b>10</b>

Cleansed		Situation		Reason	
Date <b>20170228</b>	Clean Date	Weather		Remark	
Start Time <b>09:00</b>		Truck <b>4165</b>	Inspection Dir. <b>DOWNSTREAM</b>	Info	
Operator <b>STEVEN</b>	Customer	Present	Flow Control	Camera	
Operator Comment	P.O. Number				



\* = clock positions adjusted automatically for reverse inspection

Scale: 1:1100